

Latest Schema Release

1. <?xml version="1.0" encoding="UTF-8"?>
2. <xsd:schema
3. targetNamespace="http://www.akomantoso.org/1.0"
4. xmlns="http://www.akomantoso.org/1.0"
5. elementFormDefault="qualified"
6. xmlns:xsd="http://www.w3.org/2001/XMLSchema"

7. >

8.

9.

10.

11. <xsd:annotation>

12. <xsd:documentation>

13.

=====
==

14. Akoma Ntoso main schema

15.

16.

17. Release 16th March 2009

18. technical supervision Fabio Vitali - University of Bologna

19. legal domain supervision Monica Palmirani - University of Bologna

20.

21. The present schema uses systematically XML design patterns as
22. described in <http://www.xmlpatterns.com/>

23. A few of them are explicitly mentioned, when their use or approach
24. was not felt clear or natural enough. Others are just used without
25. mentions.

26.

=====
==

27. </xsd:documentation>

28. </xsd:annotation>

29.

30. <xsd:annotation>

31. <xsd:documentation>

32.

=====
==

33.
34. Main element groups
35.
36.

==

```
37.     </xsd:documentation>
38. </xsd:annotation>
39.
40. <xsd:group name="ANhier">
41.     <xsd:choice>
42.         <xsd:element ref="section"/>
43.         <xsd:element ref="part"/>
44.         <xsd:element ref="paragraph"/>
45.         <xsd:element ref="chapter"/>
46.         <xsd:element ref="title"/>
47.         <xsd:element ref="book"/>
48.         <xsd:element ref="tome"/>
49.         <xsd:element ref="article"/>
50.         <xsd:element ref="clause"/>
51.         <xsd:element ref="subsection"/>
52.         <xsd:element ref="subpart"/>
53.         <xsd:element ref="subparagraph"/>
54.         <xsd:element ref="subchapter"/>
55.         <xsd:element ref="subtitle"/>
56.         <xsd:element ref="subclause"/>
57.     </xsd:choice>
58. </xsd:group>
59.
60. <xsd:group name="ANcontainers">
61.     <xsd:choice>
62.         <xsd:element ref="speech"/>
63.         <xsd:element ref="question"/>
64.         <xsd:element ref="answer"/>
65.         <xsd:element ref="other"/>
66.         <xsd:element ref="scene"/>
67.     </xsd:choice>
68. </xsd:group>
69.
70. <xsd:group name="ANblock">
71.     <xsd:choice>
```

```
72.         <xsd:element ref="toc"/>
73.         <xsd:element ref="list"/>
74.         <xsd:element ref="tblock"/>
75.     </xsd:choice>
76. </xsd:group>
77.
78. <xsd:group name="ANinline">
79.     <xsd:choice>
80.         <xsd:element ref="def"/>
81.         <xsd:element ref="remark"/>
82.         <xsd:element ref="ref"/>
83.         <xsd:element ref="mref"/>
84.         <xsd:element ref="rref"/>
85.         <xsd:element ref="mod"/>
86.         <xsd:element ref="mmod"/>
87.         <xsd:element ref="rmod"/>
88.         <xsd:element ref="ins"/>
89.         <xsd:element ref="del"/>
90.         <xsd:element ref="omissis"/>
91.     </xsd:choice>
92. </xsd:group>
93.
94. <xsd:group name="ANtitleInline">
95.     <xsd:choice>
96.         <xsd:element ref="docType"/>
97.         <xsd:element ref="docTitle"/>
98.         <xsd:element ref="docNumber"/>
99.         <xsd:element ref="docProponent"/>
100.         <xsd:element ref="docDate"/>
101.         <xsd:element ref="docPurpose"/>
102.     </xsd:choice>
103. </xsd:group>
104.
105. <xsd:group name="ANheaderInline">
106.     <xsd:choice>
107.         <xsd:element ref="courtType"/>
108.         <xsd:element ref="neutralCitation"/>
109.         <xsd:element ref="party"/>
110.         <xsd:element ref="judge"/>
111.         <xsd:element ref="lawyer"/>
```

```
112.         <xsd:element ref="signature"/>
113.         <xsd:element ref="opinion"/>
114.     </xsd:choice>
115. </xsd:group>
116.
117. <xsd:group name="ANotherInline">
118.     <xsd:choice>
119.         <xsd:element ref="entity"/>
120.         <xsd:element ref="date"/>
121.     </xsd:choice>
122. </xsd:group>
123.
124. <xsd:group name="ANmarker">
125.     <xsd:choice>
126.         <xsd:element ref="noteRef"/>
127.         <xsd:element ref="recordedTime"/>
128.         <xsd:element ref="eol"/>
129.         <xsd:element ref="eop"/>
130.     </xsd:choice>
131. </xsd:group>
132.
133. <xsd:group name="HTMLcontainers">
134.     <xsd:sequence>
135.         <xsd:element ref="div"/>
136.     </xsd:sequence>
137. </xsd:group>
138.
139. <xsd:group name="HTMLblock">
140.     <xsd:choice>
141.         <xsd:element ref="p"/>
142.         <xsd:element ref="ul"/>
143.         <xsd:element ref="ol"/>
144.         <xsd:element ref="table"/>
145.     </xsd:choice>
146. </xsd:group>
147.
148. <xsd:group name="HTMLinline">
149.     <xsd:choice>
150.         <xsd:element ref="span"/>
151.         <xsd:element ref="b"/>
```

```
152.         <xsd:element ref="i"/>
153.         <xsd:element ref="a"/>
154.     </xsd:choice>
155. </xsd:group>
156.
157. <xsd:group name="HTMLmarker">
158.     <xsd:sequence>
159.         <xsd:element ref="img"/>
160.     </xsd:sequence>
161. </xsd:group>
162.
163. <xsd:group name="hierElements">
164.     <xsd:choice>
165.         <xsd:group ref="ANhier" />
166.         <xsd:element ref="hcontainer"/>
167.     </xsd:choice>
168. </xsd:group>
169.
170. <xsd:group name="containerElements">
171.     <xsd:choice>
172.         <xsd:group ref="ANcontainers" />
173.         <xsd:group ref="HTMLcontainers" />
174.         <xsd:element ref="container"/>
175.     </xsd:choice>
176. </xsd:group>
177.
178. <xsd:group name="blockElements">
179.     <xsd:choice>
180.         <xsd:group ref="ANblock" />
181.         <xsd:group ref="HTMLblock" />
182.         <xsd:element ref="block"/>
183.         <xsd:element ref="foreign"/>
184.     </xsd:choice>
185. </xsd:group>
186.
187. <xsd:group name="inlineElements">
188.     <xsd:choice>
189.         <xsd:group ref="ANinline" />
190.         <xsd:group ref="HTMLinline" />
191.         <xsd:element ref="inline"/>
```

```
192.         <xsd:group ref="ANtitleInline" />
193.         <xsd:group ref="ANheaderInline" />
194.     </xsd:choice>
195. </xsd:group>
196.
197. <xsd:group name="markerElements">
198.     <xsd:choice>
199.         <xsd:group ref="ANmarker" />
200.         <xsd:group ref="HTMLmarker" />
201.         <xsd:element ref="marker"/>
202.     </xsd:choice>
203. </xsd:group>
204.
205.
206. <xsd:group name="inlineCM">
207.     <xsd:choice>
208.         <xsd:group ref="inlineElements" />
209.         <xsd:group ref="markerElements" />
210.     </xsd:choice>
211. </xsd:group>
212.
213. <xsd:group name="judgementBlock">
214.     <xsd:choice>
215.         <xsd:element ref="introduction"/>
216.         <xsd:element ref="background"/>
217.         <xsd:element ref="motivation"/>
218.         <xsd:element ref="decision"/>
219.     </xsd:choice>
220. </xsd:group>
221.
222. <xsd:group name="speechSection">
223.     <xsd:choice>
224.         <xsd:element ref="administrationOfOath"/>
225.         <xsd:element ref="declarationOfVote"/>
226.         <xsd:element ref="communication"/>
227.         <xsd:element ref="petitions"/>
228.         <xsd:element ref="papers"/>
229.         <xsd:element ref="noticesOfMotion"/>
230.         <xsd:element ref="questions"/>
231.         <xsd:element ref="address"/>
232.         <xsd:element ref="proceduralMotions"/>
```

233. <xsd:element ref="pointOfOrder"/>
234. <xsd:element ref="subdivision"/>
235. </xsd:choice>
236. </xsd:group>
237.
238. <xsd:annotation>
239. <xsd:documentation>
240.

=====
==

241.
242. Attribute groups
243.
244.

=====
==

245. </xsd:documentation>
246. </xsd:annotation>
247.
248. <xsd:attributeGroup name="name">
249. <xsd:attribute name="name" type="xsd:string" use="required"/>
250. </xsd:attributeGroup>
251.
252. <xsd:attributeGroup name="source">
253. <xsd:attribute name="source" type="xsd:anyURI" use="required"/>
254. </xsd:attributeGroup>
255.
256. <xsd:attributeGroup name="date">
257. <xsd:attribute name="date" type="xsd:date" use="required"/>
258. </xsd:attributeGroup>
259.
260. <xsd:attributeGroup name="time">
261. <xsd:attribute name="time" type="xsd:time" use="required"/>
262. </xsd:attributeGroup>
263.
264. <xsd:attributeGroup name="link">
265. <xsd:attribute name="href" type="xsd:anyURI" use="required"/>
266. </xsd:attributeGroup>
267.
268. <xsd:attributeGroup name="linkopt">
269. <xsd:attribute name="href" type="xsd:anyURI"/>

```
270. </xsd:attributeGroup>
271.
272. <xsd:attributeGroup name="value">
273.     <xsd:attribute name="value" type="xsd:string" use="required"/>
274. </xsd:attributeGroup>
275.
276. <xsd:attributeGroup name="optvalue">
277.     <xsd:attribute name="value" type="xsd:string"/>
278. </xsd:attributeGroup>
279.
280. <xsd:attributeGroup name="speechAtts">
281.     <xsd:attribute name="by" type="xsd:anyURI" use="required"/>
282.     <xsd:attribute name="as" type="xsd:anyURI"/>
283.     <xsd:attribute name="to" type="xsd:anyURI"/>
284. </xsd:attributeGroup>
285.
286. <xsd:attributeGroup name="show">
287.     <xsd:attribute name="showAs" type="xsd:string" use="required"/>
288.     <xsd:attribute name="shortForm" type="xsd:string"/>
289. </xsd:attributeGroup>
290.
291. <xsd:attributeGroup name="period">
292.     <xsd:attribute name="start" type="xsd:anyURI"/>
293.     <xsd:attribute name="end" type="xsd:anyURI"/>
294.     <xsd:attribute name="startEfficacy" type="xsd:anyURI"/>
295.     <xsd:attribute name="endEfficacy" type="xsd:anyURI"/>
296. </xsd:attributeGroup>
297.
298. <xsd:attributeGroup name="enactment">
299.     <xsd:attributeGroup ref="period"/>
300.     <xsd:attribute name="status" type="statusType"/>
301. </xsd:attributeGroup>
302.
303. <xsd:attributeGroup name="modifiers">
304.     <xsd:attribute name="exclusion" type="xsd:boolean"/>
305.     <xsd:attribute name="incomplete" type="xsd:boolean"/>
306. </xsd:attributeGroup>
307.
308. <xsd:attributeGroup name="role">
309.     <xsd:attribute name="as" type="xsd:anyURI"/>
```

```
310.     </xsd:attributeGroup>
311.
312.     <xsd:attributeGroup name="cellattrs">
313.         <xsd:attribute name="rowspan" type="xsd:integer" default="1" />
314.         <xsd:attribute name="colspan" type="xsd:integer" default="1" />
315.     </xsd:attributeGroup>
316.
317.     <xsd:attributeGroup name="HTMLattrs">
318.         <xsd:attribute name="class" type="xsd:string"/>
319.         <xsd:attribute name="style" type="xsd:string"/>
320.         <xsd:attribute name="title" type="xsd:string"/>
321.     </xsd:attributeGroup>
322.
323.     <xsd:attributeGroup name="idreq">
324.         <xsd:attribute name="id" type="xsd:ID" use="required"/>
325.     </xsd:attributeGroup>
326.
327.     <xsd:attributeGroup name="idopt">
328.         <xsd:attribute name="id" type="xsd:ID"/>
329.     </xsd:attributeGroup>
330.
331.     <xsd:attributeGroup name="refers">
332.         <xsd:attribute name="refersTo" type="xsd:IDREF"/>
333.     </xsd:attributeGroup>
334.
335.     <xsd:attributeGroup name="refersreq">
336.         <xsd:attribute name="refersTo" type="xsd:IDREF" use="required"/>
337.     </xsd:attributeGroup>
338.
339.     <xsd:attributeGroup name="corereq">
340.         <xsd:attributeGroup ref="HTMLattrs"/>
341.         <xsd:attributeGroup ref="enactment"/>
342.         <xsd:attributeGroup ref="idreq"/>
343.         <xsd:attributeGroup ref="refers"/>
344.     </xsd:attributeGroup>
345.
346.     <xsd:attributeGroup name="corereqreq">
347.         <xsd:attributeGroup ref="HTMLattrs"/>
348.         <xsd:attributeGroup ref="enactment"/>
349.         <xsd:attributeGroup ref="idreq"/>
```

```
350.         <xsd:attributeGroup ref="refersreq"/>
351.     </xsd:attributeGroup>
352.
353.     <xsd:attributeGroup name="coreopt">
354.         <xsd:attributeGroup ref="HTMLattrs"/>
355.         <xsd:attributeGroup ref="enactment"/>
356.         <xsd:attributeGroup ref="idopt"/>
357.         <xsd:attributeGroup ref="refers"/>
358.     </xsd:attributeGroup>
359.
360.     <xsd:annotation>
361.         <xsd:documentation>
362.
```

=====
==

```
363.
364.         Simple types (data values)
365.
366.
```

=====
==

```
367.         </xsd:documentation>
368.     </xsd:annotation>
369.
370.     <xsd:simpleType name="versionType" >
371.         <xsd:restriction base="xsd:string">
372.             <xsd:enumeration value="originalVersion" />
373.             <xsd:enumeration value="singleVersion" />
374.             <xsd:enumeration value="multipleVersions" />
375.         </xsd:restriction>
376.     </xsd:simpleType>
377.
378.     <xsd:simpleType name="eventType" >
379.         <xsd:restriction base="xsd:string">
380.             <xsd:enumeration value="generation" />
381.             <xsd:enumeration value="amendment" />
382.             <xsd:enumeration value="repeal" />
383.         </xsd:restriction>
384.     </xsd:simpleType>
385.
386.     <xsd:simpleType name="statusType" >
```

```
387.         <xsd:restriction base="xsd:string">
388.             <xsd:enumeration value="omissis" />
389.             <xsd:enumeration value="repealed" />
390.             <xsd:enumeration value="suspended" />
391.             <xsd:enumeration value="editorial" />
392.         </xsd:restriction>
393.     </xsd:simpleType>
394.
395.     <xsd:simpleType name="remarkType" >
396.         <xsd:restriction base="xsd:string">
397.             <xsd:enumeration value="sceneDescription" />
398.             <xsd:enumeration value="phenomenon" />
399.             <xsd:enumeration value="caption" />
400.             <xsd:enumeration value="translation" />
401.         </xsd:restriction>
402.     </xsd:simpleType>
403.
404.     <xsd:simpleType name="timeType" >
405.         <xsd:restriction base="xsd:string">
406.             <xsd:enumeration value="startEvent" />
407.             <xsd:enumeration value="endEvent" />
408.         </xsd:restriction>
409.     </xsd:simpleType>
410.
411.
412.     <xsd:simpleType name="outOfLineType" >
413.         <xsd:restriction base="xsd:string">
414.             <xsd:enumeration value="sideNote" />
415.             <xsd:enumeration value="publicationNote" />
416.         </xsd:restriction>
417.     </xsd:simpleType>
418.
419.     <xsd:annotation>
420.         <xsd:documentation>
421.
```

=====
==

```
422.
423.         Complex types (markup structures)
424.
425.
```

=====

```
==
426.         </xsd:documentation>
427.     </xsd:annotation>
428.
429.     <xsd:complexType name="basehierarchy" >
430.         <xsd:sequence >
431.             <xsd:element ref="num" minOccurs="0" maxOccurs="1" />
432.             <xsd:element ref="heading" minOccurs="0" maxOccurs="1" />
433.             <xsd:element ref="subheading" minOccurs="0" maxOccurs="1" />
434.         </xsd:sequence>
435.     </xsd:complexType>
436.
437.     <xsd:complexType name="hierarchy" >
438.         <xsd:complexContent>
439.             <xsd:extension base="basehierarchy">
440.                 <xsd:choice >
441.                     <xsd:group ref="hierElements" minOccurs="1"
maxOccurs="unbounded" />
442.                     <xsd:element ref="content" />
443.                 </xsd:choice>
444.                 <xsd:attributeGroup ref="corereq"/>
445.             </xsd:extension>
446.         </xsd:complexContent>
447.     </xsd:complexType>
448.
449.     <xsd:complexType name="althierarchy" >
450.         <xsd:complexContent>
451.             <xsd:extension base="basehierarchy">
452.                 <xsd:choice minOccurs="0" maxOccurs="unbounded" >
453.                     <xsd:group ref="speechSection" />
454.                     <xsd:group ref="containerElements" />
455.                 </xsd:choice>
456.                 <xsd:attributeGroup ref="corereq"/>
457.             </xsd:extension>
458.         </xsd:complexContent>
459.     </xsd:complexType>
460.
461.     <xsd:complexType name="blocksreq" >
462.         <xsd:sequence minOccurs="1" maxOccurs="unbounded" >
463.             <xsd:group ref="blockElements" />
464.         </xsd:sequence>
```

```
465.         <xsd:attributeGroup ref="corereq"/>
466.     </xsd:complexType>
467.
468.     <xsd:complexType name="blocksopt" >
469.         <xsd:sequence minOccurs="1" maxOccurs="unbounded" >
470.             <xsd:group ref="blockElements" />
471.         </xsd:sequence>
472.         <xsd:attributeGroup ref="coreopt"/>
473.     </xsd:complexType>
474.
475.     <xsd:complexType name="inline" mixed="true">
476.         <xsd:choice minOccurs="0" maxOccurs="unbounded" >
477.             <xsd:group ref="inlineCM" />
478.         </xsd:choice>
479.         <xsd:attributeGroup ref="coreopt"/>
480.     </xsd:complexType>
481.
482.     <xsd:complexType name="inlinereq" mixed="true">
483.         <xsd:choice minOccurs="0" maxOccurs="unbounded" >
484.             <xsd:group ref="inlineCM" />
485.         </xsd:choice>
486.         <xsd:attributeGroup ref="corereq"/>
487.     </xsd:complexType>
488.
489.     <xsd:complexType name="inlinereqreq" mixed="true">
490.         <xsd:choice minOccurs="0" maxOccurs="unbounded" >
491.             <xsd:group ref="inlineCM" />
492.         </xsd:choice>
493.         <xsd:attributeGroup ref="corereqreq"/>
494.     </xsd:complexType>
495.
496.     <xsd:complexType name="markerreq" >
497.         <xsd:attributeGroup ref="corereq"/>
498.     </xsd:complexType>
499.
500.     <xsd:complexType name="markeropt" >
501.         <xsd:attributeGroup ref="coreopt"/>
502.     </xsd:complexType>
503.
504.
505.
```

```
506. <xsd:complexType name="metareq" >
507.     <xsd:attributeGroup ref="idreq"/>
508. </xsd:complexType>
509.
510. <xsd:complexType name="metaopt" >
511.     <xsd:attributeGroup ref="idopt"/>
512. </xsd:complexType>
513.
514. <xsd:complexType name="anyOther" >
515.     <xsd:choice minOccurs="0" maxOccurs="unbounded">
516.         <xsd:any namespace="##other"/>
517.     </xsd:choice>
518. </xsd:complexType>
519.
520. <xsd:complexType name="maincontent" >
521.     <xsd:choice minOccurs="1" maxOccurs="unbounded" >
522.         <xsd:group ref="hierElements" />
523.         <xsd:group ref="blockElements" />
524.         <xsd:group ref="containerElements" />
525.     </xsd:choice>
526.     <xsd:attributeGroup ref="coreopt"/>
527. </xsd:complexType>
528.
529. <xsd:complexType name="speechType" >
530.     <xsd:sequence >
531.         <xsd:element ref="from" />
532.         <xsd:sequence minOccurs="1" maxOccurs="unbounded" >
533.             <xsd:group ref="blockElements" />
534.         </xsd:sequence>
535.     </xsd:sequence>
536.     <xsd:attributeGroup ref="coreopt"/>
537.     <xsd:attributeGroup ref="speechAtts"/>
538. </xsd:complexType>
539.
540. <xsd:complexType name="referenceType" >
541.     <xsd:attributeGroup ref="idreq"/>
542.     <xsd:attributeGroup ref="link"/>
543.     <xsd:attributeGroup ref="show"/>
544. </xsd:complexType>
545.
```

```
546. <xsd:complexType name="argumentType" >
547.     <xsd:attributeGroup ref="idopt"/>
548.     <xsd:attributeGroup ref="link"/>
549.     <xsd:attribute name="upTo" type="xsd:anyURI"/>
550. </xsd:complexType>
551.
552. <xsd:complexType name="periodType" >
553.     <xsd:attributeGroup ref="idopt"/>
554.     <xsd:attributeGroup ref="period"/>
555. </xsd:complexType>
556.
557. <xsd:complexType name="anyOtherType" >
558.     <xsd:choice minOccurs="0" maxOccurs="unbounded">
559.         <xsd:any namespace="##other"/>
560.     </xsd:choice>
561.     <xsd:attributeGroup ref="idopt"/>
562.     <xsd:attributeGroup ref="linkopt"/>
563. </xsd:complexType>
564.
565. <xsd:annotation>
566.     <xsd:documentation>
```

=====

```
568.
569.     Root element
570.     Comment: One generic root element contains all document elements
571.     Pattern: Universal Root
572.     Reference: http://www.xmlpatterns.com/UniversalRootMain.shtml
573.
574.
```

=====

```
575.         </xsd:documentation>
576.     </xsd:annotation>
577.
578. <xsd:group name="legislativeDocs">
579.     <xsd:choice>
580.         <xsd:element ref="act"/>
581.         <xsd:element ref="bill"/>
582.     </xsd:choice>
```

```
583.      </xsd:group>
584.
585.      <xsd:group name="judgementDocs">
586.          <xsd:sequence>
587.              <xsd:element ref="judgement"/>
588.          </xsd:sequence>
589.      </xsd:group>
590.
591.      <xsd:group name="debateDocs">
592.          <xsd:choice>
593.              <xsd:element ref="report"/>
594.              <xsd:element ref="debateRecord"/>
595.          </xsd:choice>
596.      </xsd:group>
597.
598.      <xsd:complexType name="documentType" >
599.          <xsd:choice >
600.              <xsd:group ref="legislativeDocs" />
601.              <xsd:group ref="debateDocs" />
602.              <xsd:group ref="judgementDocs" />
603.              <xsd:element ref="doc" />
604.          </xsd:choice>
605.      </xsd:complexType>
606.
607.      <xsd:element name="akomaNtoso" type="documentType" />
608.
609.      <xsd:annotation>
610.          <xsd:documentation>
```

=====

```
612.
613.      Document elements
614.      Comment: All document elements share just two content models
615.      Pattern: Consistent Element Set
616.      Reference: http://www.xmlpatterns.com/ConsistentElementSetMain.shtml
617.
618.
```

=====

```
619.      </xsd:documentation>
```

```

620.      </xsd:annotation>
621.
622.
623.      <xsd:complexType name="hierarchicalStructure" >
624.          <xsd:sequence >
625.              <xsd:element ref="meta" />
626.              <xsd:element ref="preface" minOccurs="0" maxOccurs="1" />
627.              <xsd:element ref="preamble" minOccurs="0" maxOccurs="1" />
628.              <xsd:element ref="body" />
629.              <xsd:element ref="conclusions" minOccurs="0" maxOccurs="1" />
630.              <xsd:element ref="outOfLines" minOccurs="0" maxOccurs="1" />
631.              <xsd:element ref="attachments" minOccurs="0" maxOccurs="1" />
632.          </xsd:sequence>
633.          <xsd:attribute name="contains" type="versionType"
        default="originalVersion" />
634.      </xsd:complexType>
635.
636.      <xsd:complexType name="openStructure" >
637.          <xsd:sequence >
638.              <xsd:element ref="meta" />
639.              <xsd:element ref="preface" minOccurs="0" maxOccurs="1" />
640.              <xsd:element ref="preamble" minOccurs="0" maxOccurs="1" />
641.              <xsd:element ref="mainContent" />
642.              <xsd:element ref="conclusions" minOccurs="0" maxOccurs="1" />
643.              <xsd:element ref="outOfLines" minOccurs="0" maxOccurs="1" />
644.              <xsd:element ref="attachments" minOccurs="0" maxOccurs="1" />
645.          </xsd:sequence>
646.          <xsd:attribute name="contains" type="versionType"
        default="originalVersion" />
647.      </xsd:complexType>
648.
649.      <xsd:complexType name="debateStructure" >
650.          <xsd:sequence >
651.              <xsd:element ref="meta" />
652.              <xsd:element ref="preface" minOccurs="0" maxOccurs="1" />
653.              <xsd:element ref="debate" />
654.              <xsd:element ref="conclusions" minOccurs="0" maxOccurs="1" />
655.              <xsd:element ref="outOfLines" minOccurs="0" maxOccurs="1" />
656.              <xsd:element ref="attachments" minOccurs="0" maxOccurs="1" />
657.          </xsd:sequence>
658.          <xsd:attribute name="contains" type="versionType"
        default="originalVersion" />

```

```
659.      </xsd:complexType>
660.
661.      <xsd:complexType name="judgementStructure" >
662.          <xsd:sequence >
663.              <xsd:element ref="meta" />
664.              <xsd:element ref="header" />
665.              <xsd:element ref="judgementBody" />
666.              <xsd:element ref="conclusions" />
667.              <xsd:element ref="outOfLines" minOccurs="0" maxOccurs="1" />
668.              <xsd:element ref="attachments" minOccurs="0" maxOccurs="1" />
669.          </xsd:sequence>
670.          <xsd:attribute name="contains" type="versionType"
        default="originalVersion" />
671.      </xsd:complexType>
672.
673.      <xsd:element name="act" type="hierarchicalStructure" />
674.
675.      <xsd:element name="bill" type="hierarchicalStructure" />
676.
677.      <xsd:element name="doc" type="openStructure" />
678.
679.      <xsd:element name="report" type="openStructure" />
680.
681.      <xsd:element name="debateRecord" type="debateStructure" />
682.
683.      <xsd:element name="judgement" type="judgementStructure" />
684.
685.      <xsd:annotation>
686.          <xsd:documentation>
687.
```

=====
==

```
688.
689.      AN common containers elements
690.
691.
```

=====
==

```
692.          </xsd:documentation>
693.      </xsd:annotation>
694.
```

```

695.      <xsd:element name="preface" type="blocksopt" />
696.
697.      <xsd:element name="preamble" type="blocksopt" />
698.
699.      <xsd:element name="conclusions" type="blocksopt" />
700.
701.      <xsd:element name="header" type="blocksopt" />
702.
703.      <xsd:element name="attachments" >
704.          <xsd:complexType >
705.              <xsd:sequence >
706.                  <xsd:element ref="attachment" minOccurs="1"
maxOccurs="unbounded" />
707.              </xsd:sequence>
708.              <xsd:attributeGroup ref="coreopt"/>
709.          </xsd:complexType>
710.      </xsd:element>
711.
712.      <xsd:element name="attachment" type="referenceType" />
713.
714.      <xsd:element name="outOfLines" >
715.          <xsd:complexType >
716.              <xsd:sequence minOccurs="1" maxOccurs="unbounded" >
717.                  <xsd:element ref="outOfLine" />
718.              </xsd:sequence>
719.          </xsd:complexType>
720.      </xsd:element>
721.
722.      <xsd:element name="outOfLine" >
723.          <xsd:complexType>
724.              <xsd:complexContent>
725.                  <xsd:extension base="blocksreq">
726.                      <xsd:attributeGroup ref="link"/>
727.                      <xsd:attribute name="type" type="outOfLineType"
use="required"/>
728.                  </xsd:extension>
729.              </xsd:complexContent>
730.          </xsd:complexType>
731.      </xsd:element>
732.
733.      <xsd:element name="body" >

```

```
734.         <xsd:complexType >
735.             <xsd:sequence minOccurs="1" maxOccurs="unbounded" >
736.                 <xsd:group ref="hierElements" />
737.             </xsd:sequence>
738.             <xsd:attributeGroup ref="coreopt"/>
739.         </xsd:complexType>
740.     </xsd:element>
741.
742.     <xsd:element name="debate" >
743.         <xsd:complexType >
744.             <xsd:sequence minOccurs="1" maxOccurs="unbounded" >
745.                 <xsd:group ref="speechSection" />
746.             </xsd:sequence>
747.             <xsd:attributeGroup ref="coreopt"/>
748.         </xsd:complexType>
749.     </xsd:element>
750.
751.     <xsd:element name="mainContent" type="maincontent" />
752.
753.     <xsd:element name="judgementBody" >
754.         <xsd:complexType >
755.             <xsd:sequence minOccurs="1" maxOccurs="unbounded" >
756.                 <xsd:group ref="judgementBlock" />
757.             </xsd:sequence>
758.             <xsd:attributeGroup ref="coreopt"/>
759.         </xsd:complexType>
760.     </xsd:element>
761.
762.     <xsd:annotation>
763.         <xsd:documentation>
```

=====
==

```
765.
766.         Elements for hierarchical documents
767.
768.
```

=====
==

```
769.         </xsd:documentation>
770.     </xsd:annotation>
```

771.
772. <xsd:element name="section" type="hierarchy" />
773.
774. <xsd:element name="part" type="hierarchy" />
775.
776. <xsd:element name="paragraph" type="hierarchy" />
777.
778. <xsd:element name="chapter" type="hierarchy" />
779.
780. <xsd:element name="title" type="hierarchy" />
781.
782. <xsd:element name="book" type="hierarchy" />
783.
784. <xsd:element name="tome" type="hierarchy" />
785.
786. <xsd:element name="article" type="hierarchy" />
787.
788. <xsd:element name="clause" type="hierarchy" />
789.
790. <xsd:element name="subsection" type="hierarchy" />
791.
792. <xsd:element name="subpart" type="hierarchy" />
793.
794. <xsd:element name="subparagraph" type="hierarchy" />
795.
796. <xsd:element name="subchapter" type="hierarchy" />
797.
798. <xsd:element name="subtitle" type="hierarchy" />
799.
800. <xsd:element name="subclause" type="hierarchy" />
801.
802. <xsd:element name="content" type="blocksopt" />
803.
804. <xsd:element name="num" type="inline" />
805.
806. <xsd:element name="heading" type="inline" />
807.
808. <xsd:element name="subheading" type="inline" />
809.
810. <xsd:element name="from" type="inline" />

811.
812.
813.
814.

```
<xsd:annotation>  
  <xsd:documentation>
```

==

815.
816.
817.
818.

Elements for debates documents

==

819.
820.
821.
822.
824.
825.
826.
827.
828.
829.
830.
831.
832.
833.
834.
835.
836.
837.
838.
839.
840.
841.
842.
843.
844.
845.
846.
847.
848.

```
</xsd:documentation>  
</xsd:annotation>  
  
<xsd:element name="administrationOfOath" type="althierarchy" />  
  
<xsd:element name="declarationOfVote" type="althierarchy" />  
  
<xsd:element name="communication" type="althierarchy" />  
  
<xsd:element name="petitions" type="althierarchy" />  
  
<xsd:element name="papers" type="althierarchy" />  
  
<xsd:element name="noticesOfMotion" type="althierarchy" />  
  
<xsd:element name="questions" type="althierarchy" />  
  
<xsd:element name="address" type="althierarchy" />  
  
<xsd:element name="proceduralMotions" type="althierarchy" />  
  
<xsd:element name="pointOfOrder" type="althierarchy" />  
  
<xsd:element name="subdivision" >  
  <xsd:complexType>  
    <xsd:complexContent>  
      <xsd:extension base="althierarchy">  
        <xsd:attributeGroup ref="name"/>  
      </xsd:extension>
```

```
849.         </xsd:complexContent>
850.     </xsd:complexType>
851. </xsd:element>
852.
853.     <xsd:element name="speech" type="speechType" />
854.
855.     <xsd:element name="question" type="speechType" />
856.
857.     <xsd:element name="answer" type="speechType" />
858.
859.     <xsd:element name="other" type="blocksopt" />
860.
861.     <xsd:element name="scene" type="inline" />
862.
863.     <xsd:element name="list" >
864.         <xsd:complexType >
865.             <xsd:sequence >
866.                 <xsd:element ref="item" minOccurs="1"
maxOccurs="unbounded" />
867.             </xsd:sequence>
868.             <xsd:attributeGroup ref="corereq"/>
869.         </xsd:complexType>
870.     </xsd:element>
871.
872.     <xsd:element name="introduction" type="maincontent" />
873.
874.     <xsd:element name="background" type="maincontent" />
875.
876.     <xsd:element name="motivation" type="maincontent" />
877.
878.     <xsd:element name="decision" type="maincontent" />
879.
880.     <xsd:complexType name="itemType" >
881.         <xsd:complexContent>
882.             <xsd:extension base="basehierarchy">
883.                 <xsd:sequence minOccurs="1" maxOccurs="unbounded" >
884.                     <xsd:group ref="blockElements" />
885.                 </xsd:sequence>
886.                 <xsd:attributeGroup ref="corereq"/>
887.             </xsd:extension>
888.         </xsd:complexContent>
```

```
889.         </xsd:complexType>
890.
891.         <xsd:element name="tblock" type="itemType" />
892.
893.         <xsd:element name="item" type="itemType" />
894.
895.         <xsd:annotation>
896.             <xsd:documentation>
897.
```

```
=====
==
```

```
898.
899.         AN block elements
900.         Comment: the only AN-specific block is the table of content (TOC),
901.         a structure containing toc items related to the various subparts of the
902.         main document.
903.
904.
```

```
=====
==
```

```
905.             </xsd:documentation>
906.         </xsd:annotation>
907.
908.         <xsd:element name="toc" >
909.             <xsd:complexType >
910.                 <xsd:sequence >
911.                     <xsd:element ref="tocItem" minOccurs="1"
maxOccurs="unbounded" />
912.                 </xsd:sequence>
913.             </xsd:complexType>
914.         </xsd:element>
915.
916.         <xsd:element name="tocItem" >
917.             <xsd:complexType mixed="true">
918.                 <xsd:complexContent>
919.                     <xsd:extension base="inline">
920.                         <xsd:attributeGroup ref="link"/>
921.                         <xsd:attribute name="level" type="xsd:integer"
use="required"/>
922.                     </xsd:extension>
923.                 </xsd:complexContent>
```

924. </xsd:complexType>
925. </xsd:element>
926.
927. <xsd:annotation>
928. <xsd:documentation>
929.

==

930.
931. AN inline elements
932. Comment: AN-specific inline elements are connected to the
933. identification of elements that are corresponding to an inline
934. legal structure, regardless of their position in the document.
935.
936.

==

937. </xsd:documentation>
938. </xsd:annotation>
939.
940. <xsd:element name="docType" type="inline" />
941.
942. <xsd:element name="docTitle" type="inline" />
943.
944. <xsd:element name="docNumber" type="inline" />
945.
946. <xsd:element name="docProponent" type="inline" />
947.
948. <xsd:element name="docDate" >
949. <xsd:complexType mixed="true">
950. <xsd:complexContent>
951. <xsd:extension base="inline">
952. <xsd:attributeGroup ref="date"/>
953. </xsd:extension>
954. </xsd:complexContent>
955. </xsd:complexType>
956. </xsd:element>
957.
958. <xsd:element name="docPurpose" type="inline" />
959.
960. <xsd:element name="courtType" type="inline" />

```
961.
962.     <xsd:element name="neutralCitation" type="inline" />
963.
964.     <xsd:element name="party" >
965.         <xsd:complexType mixed="true">
966.             <xsd:complexContent>
967.                 <xsd:extension base="inlinereqreq">
968.                     <xsd:attributeGroup ref="role"/>
969.                 </xsd:extension>
970.             </xsd:complexContent>
971.         </xsd:complexType>
972.     </xsd:element>
973.
974.     <xsd:element name="judge" >
975.         <xsd:complexType mixed="true">
976.             <xsd:complexContent>
977.                 <xsd:extension base="inlinereqreq">
978.                     <xsd:attributeGroup ref="role"/>
979.                 </xsd:extension>
980.             </xsd:complexContent>
981.         </xsd:complexType>
982.     </xsd:element>
983.
984.     <xsd:element name="lawyer" >
985.         <xsd:complexType mixed="true">
986.             <xsd:complexContent>
987.                 <xsd:extension base="inlinereqreq">
988.                     <xsd:attributeGroup ref="role"/>
989.                     <xsd:attribute name="represents" type="xsd:anyURI"/>
990.                 </xsd:extension>
991.             </xsd:complexContent>
992.         </xsd:complexType>
993.     </xsd:element>
994.
995.     <xsd:element name="signature" type="inline" />
996.
997.     <xsd:element name="opinion" type="inline" />
998.
999.     <xsd:element name="date" >
1000.         <xsd:complexType mixed="true">
```

```

1001.         <xsd:complexContent>
1002.             <xsd:extension base="inline">
1003.                 <xsd:attributeGroup ref="date"/>
1004.             </xsd:extension>
1005.         </xsd:complexContent>
1006.     </xsd:complexType>
1007.
1008. </xsd:element>
1009.
1010.     <xsd:element name="entity" type="inlinereq" />
1011.
1012.     <xsd:element name="mref" type="inline" />
1013.
1014.     <xsd:element name="ref" >
1015.         <xsd:complexType mixed="true">
1016.             <xsd:complexContent>
1017.                 <xsd:extension base="inlinereq">
1018.                     <xsd:attributeGroup ref="link"/>
1019.                 </xsd:extension>
1020.             </xsd:complexContent>
1021.         </xsd:complexType>
1022.     </xsd:element>
1023.
1024.     <xsd:element name="rref" >
1025.         <xsd:complexType mixed="true">
1026.             <xsd:complexContent>
1027.                 <xsd:extension base="inlinereq">
1028.                     <xsd:attributeGroup ref="link"/>
1029.                     <xsd:attribute name="upTo" type="xsd:anyURI"
use="required"/>
1030.                 </xsd:extension>
1031.             </xsd:complexContent>
1032.         </xsd:complexType>
1033.     </xsd:element>
1034.
1035.
1036.     <xsd:complexType name="modType" mixed="true">
1037.         <xsd:choice minOccurs="0" maxOccurs="unbounded" >
1038.             <xsd:group ref="inlineCM" />
1039.             <xsd:element ref="quotedText" />
1040.             <xsd:element ref="quotedStructure" />
1041.         </xsd:choice>

```

```
1042.         <xsd:attributeGroup ref="corereq"/>
1043.     </xsd:complexType>
1044.
1045.     <xsd:element name="mod" type="modType" />
1046.
1047.     <xsd:element name="mmod" type="modType" />
1048.
1049.     <xsd:element name="rmod" >
1050.         <xsd:complexType mixed="true">
1051.             <xsd:complexContent>
1052.                 <xsd:extension base="modType">
1053.                     <xsd:attribute name="upTo" type="xsd:anyURI"
1054.                         use="required"/>
1055.                 </xsd:extension>
1056.             </xsd:complexContent>
1057.         </xsd:complexType>
1058.     </xsd:element>
1059.
1060.     <xsd:element name="quotedText" type="inline" />
1061.
1062.     <xsd:element name="quotedStructure" >
1063.         <xsd:complexType >
1064.             <xsd:choice minOccurs="1" maxOccurs="unbounded" >
1065.                 <xsd:group ref="hierElements" />
1066.                 <xsd:group ref="blockElements" />
1067.                 <xsd:group ref="containerElements" />
1068.             </xsd:choice>
1069.             <xsd:attributeGroup ref="corereq"/>
1070.         </xsd:complexType>
1071.     </xsd:element>
1072.
1073.     <xsd:element name="def" type="inline" />
1074.
1075.     <xsd:element name="remark" >
1076.         <xsd:complexType mixed="true">
1077.             <xsd:complexContent>
1078.                 <xsd:extension base="inline">
1079.                     <xsd:attribute name="type" type="remarkType"/>
1080.                 </xsd:extension>
1081.             </xsd:complexContent>
1082.         </xsd:complexType>
```

```
1082.      </xsd:element>
1083.
1084.      <xsd:element name="ins" type="inline" />
1085.
1086.      <xsd:element name="del" type="inline" />
1087.
1088.      <xsd:element name="omissis" type="inline" />
1089.
1090.      <xsd:element name="noteRef" >
1091.          <xsd:complexType>
1092.              <xsd:complexContent>
1093.                  <xsd:extension base="markeropt">
1094.                      <xsd:attributeGroup ref="link"/>
1095.                      <xsd:attribute name="num" type="xsd:string" use="required"/>
1096.                  </xsd:extension>
1097.              </xsd:complexContent>
1098.          </xsd:complexType>
1099.      </xsd:element>
1100.
1101.      <xsd:element name="recordedTime" >
1102.          <xsd:complexType>
1103.              <xsd:complexContent>
1104.                  <xsd:extension base="markeropt">
1105.                      <xsd:attribute name="type" type="timeType"/>
1106.                      <xsd:attributeGroup ref="time"/>
1107.                  </xsd:extension>
1108.              </xsd:complexContent>
1109.          </xsd:complexType>
1110.      </xsd:element>
1111.
1112.      <xsd:complexType name="eolType" >
1113.          <xsd:complexContent>
1114.              <xsd:extension base="markeropt">
1115.                  <xsd:attribute name="breakat" type="xsd:integer"/>
1116.              </xsd:extension>
1117.          </xsd:complexContent>
1118.      </xsd:complexType>
1119.
1120.      <xsd:element name="eol" type="eolType" />
1121.
```

1122. <xsd:element name="eop" type="eolType" />

1123.

1124. <xsd:annotation>

1125. <xsd:documentation>

1126.

=====
==

1127.

1128. Generic elements

1129. Comment: All elements in this schema fall under one of five

1130. content models: hierarchical container, container, block, inline

1131. and mark. Besides named elements, the schema also provides for a

1132. generic element for each of them, that can be used for markup that

1133. fits the content models but can be specified by a precise name that

1134. is not used in this schema. The 'name' attribute must be used for

1135. naming the element.

1136. It is also a characteristic of this schema that all named elements

1137. are equivalent, and can be substituted to, the corresponding generic

1138. element with their name as the value of the name attribute. Thus, by

1139. definition, <p> = <block name="p"> , <part> =

<hcontainer name="part"> ,

1140. <act> = <container name="act"> , etc.

1141. Pattern: Generic Document + Role Attribute

1142. Reference: <http://www.xmlpatterns.com/GenericDocumentMain.shtml> +

1143. <http://www.xmlpatterns.com/RoleAttributeMain.shtml>

1144.

1145.

=====
==

1146. </xsd:documentation>

1147. </xsd:annotation>

1148.

1149. <xsd:element name="hcontainer" >

1150. <xsd:complexType>

1151. <xsd:complexContent>

1152. <xsd:extension base="hierarchy">

1153. <xsd:attributeGroup ref="name"/>

1154. </xsd:extension>

1155. </xsd:complexContent>

1156. </xsd:complexType>

1157. </xsd:element>

1158.
1159. <xsd:element name="container" >
1160. <xsd:complexType>
1161. <xsd:complexContent>
1162. <xsd:extension base="blocksreq">
1163. <xsd:attributeGroup ref="name"/>
1164. </xsd:extension>
1165. </xsd:complexContent>
1166. </xsd:complexType>
1167. </xsd:element>
1168.
1169. <xsd:element name="block" >
1170. <xsd:complexType mixed="true">
1171. <xsd:complexContent>
1172. <xsd:extension base="inline">
1173. <xsd:attributeGroup ref="name"/>
1174. </xsd:extension>
1175. </xsd:complexContent>
1176. </xsd:complexType>
1177. </xsd:element>
1178.
1179. <xsd:element name="inline" >
1180. <xsd:complexType mixed="true">
1181. <xsd:complexContent>
1182. <xsd:extension base="inline">
1183. <xsd:attributeGroup ref="name"/>
1184. </xsd:extension>
1185. </xsd:complexContent>
1186. </xsd:complexType>
1187. </xsd:element>
1188.
1189. <xsd:element name="marker" >
1190. <xsd:complexType>
1191. <xsd:complexContent>
1192. <xsd:extension base="markerreq">
1193. <xsd:attributeGroup ref="name"/>
1194. </xsd:extension>
1195. </xsd:complexContent>
1196. </xsd:complexType>
1197. </xsd:element>

1198.

1199. <xsd:element name="foreign" type="anyOther" />

1200.

1201. <xsd:annotation>

1202. <xsd:documentation>

1203.

==

1204.

1205. HTML elements

1206. Comment: Many elements are drawn directly from HTML 4.0

1207. Pattern: Reuse Document Types (partial)

1208. Reference: <http://www.xmlpatterns.com/ReuseDocumentTypesMain.shtml>

1209.

1210.

==

1211. </xsd:documentation>

1212. </xsd:annotation>

1213.

1214. <xsd:element name="div" type="blocksreq" />

1215.

1216. <xsd:element name="p" type="inline" />

1217.

1218. <xsd:element name="li" >

1219. <xsd:complexType mixed="true">

1220. <xsd:choice minOccurs="0" maxOccurs="unbounded" >

1221. <xsd:group ref="inlineCM" />

1222. <xsd:element ref="ul" />

1223. <xsd:element ref="ol" />

1224. <xsd:element ref="p" />

1225. </xsd:choice>

1226. <xsd:attributeGroup ref="optvalue"/>

1227. <xsd:attributeGroup ref="coreopt"/>

1228. </xsd:complexType>

1229. </xsd:element>

1230.

1231. <xsd:element name="span" type="inline" />

1232.

1233. <xsd:element name="b" type="inline" />

1234.

```

1235. <xsd:element name="i" type="inline" />
1237.
1238. <xsd:element name="a" >
1239.     <xsd:complexType mixed="true">
1240.         <xsd:complexContent>
1241.             <xsd:extension base="inline">
1242.                 <xsd:attributeGroup ref="link"/>
1243.                 <xsd:attribute name="target" type="xsd:string"/>
1244.             </xsd:extension>
1245.         </xsd:complexContent>
1246.     </xsd:complexType>
1247. </xsd:element>
1248.
1249. <xsd:element name="img" >
1250.     <xsd:complexType>
1251.         <xsd:complexContent>
1252.             <xsd:extension base="markeropt">
1253.                 <xsd:attribute name="src" type="xsd:anyURI" use="required"/
1254.                 >
1255.                 <xsd:attribute name="alt" type="xsd:string"/>
1256.                 <xsd:attribute name="width" type="xsd:integer"/>
1257.                 <xsd:attribute name="height" type="xsd:integer"/>
1258.             </xsd:extension>
1259.         </xsd:complexContent>
1260.     </xsd:complexType>
1261. </xsd:element>
1262. <xsd:complexType name="listItems" >
1263.     <xsd:sequence >
1264.         <xsd:element ref="li" minOccurs="1" maxOccurs="unbounded" />
1265.     </xsd:sequence>
1266.     <xsd:attributeGroup ref="corereq"/>
1267. </xsd:complexType>
1268.
1269. <xsd:element name="ul" type="listItems" />
1270.
1271. <xsd:element name="ol" type="listItems" />
1272.
1273. <xsd:element name="table" >
1274.     <xsd:complexType >

```

```

1275.         <xsd:sequence >
1276.             <xsd:element ref="tr" minOccurs="1" maxOccurs="unbounded" />
1277.         </xsd:sequence>
1278.             <xsd:attributeGroup ref="corereq"/>
1279.             <xsd:attribute name="width" type="xsd:integer"/>
1280.             <xsd:attribute name="border" type="xsd:integer"/>
1281.             <xsd:attribute name="cellspacing" type="xsd:integer"/>
1282.             <xsd:attribute name="cellpadding" type="xsd:integer"/>
1283.         </xsd:complexType>
1284.     </xsd:element>
1285.
1286.     <xsd:element name="tr" >
1287.         <xsd:complexType >
1288.             <xsd:choice minOccurs="1" maxOccurs="unbounded" >
1289.                 <xsd:element ref="th" />
1290.                 <xsd:element ref="td" />
1291.             </xsd:choice>
1292.             <xsd:attributeGroup ref="corereq"/>
1293.         </xsd:complexType>
1294.     </xsd:element>
1295.
1296.     <xsd:element name="th" >
1297.         <xsd:complexType mixed="true">
1298.             <xsd:complexContent>
1299.                 <xsd:extension base="inline">
1300.                     <xsd:attributeGroup ref="cellattrs"/>
1301.                 </xsd:extension>
1302.             </xsd:complexContent>
1303.         </xsd:complexType>
1304.     </xsd:element>
1305.
1306.     <xsd:element name="td" >
1307.         <xsd:complexType mixed="true">
1308.             <xsd:complexContent>
1309.                 <xsd:extension base="inline">
1310.                     <xsd:attributeGroup ref="cellattrs"/>
1311.                 </xsd:extension>
1312.             </xsd:complexContent>
1313.         </xsd:complexType>
1314.     </xsd:element>

```

1315.

1316. <xsd:annotation>

1317. <xsd:documentation>

1318.

==

1319.

1320. Metadata elements for acts, bills and generic documents

1321.

1322.

==

1323. </xsd:documentation>

1324. </xsd:annotation>

1325.

1326. <xsd:element name="meta" >

1327. <xsd:complexType >

1328. <xsd:sequence >

1329. <xsd:element ref="identification" />

1330. <xsd:element ref="publication" />

1331. <xsd:element ref="classification" minOccurs="0"
maxOccurs="unbounded" />

1332. <xsd:element ref="lifecycle" minOccurs="0"
maxOccurs="unbounded" />

1333. <xsd:element ref="workflow" minOccurs="0"
maxOccurs="unbounded" />

1334. <xsd:element ref="analysis" minOccurs="0"
maxOccurs="unbounded" />

1335. <xsd:element ref="references" minOccurs="0"
maxOccurs="unbounded" />

1336. <xsd:element ref="notes" minOccurs="0"
maxOccurs="unbounded" />

1337. <xsd:element ref="proprietary" minOccurs="0"
maxOccurs="unbounded" />

1338. </xsd:sequence>

1339. </xsd:complexType>

1340. </xsd:element>

1341.

1342. <xsd:element name="identification" >

1343. <xsd:complexType >

1344. <xsd:sequence >

1345. <xsd:element ref="FRBRWork" />

```
1346.           <xsd:element ref="FRBRExpression" />
1347.           <xsd:element ref="FRBRManifestation" />
1348.           <xsd:element ref="FRBRItem" minOccurs="0" maxOccurs="1" />
1349.         </xsd:sequence>
1350.         <xsd:attributeGroup ref="source"/>
1351.       </xsd:complexType>
1352. </xsd:element>
1353.
1354. <xsd:complexType name="coreProperties" >
1355.   <xsd:sequence >
1356.     <xsd:element ref="FRBRthis" />
1357.     <xsd:element ref="FRBRuri" minOccurs="1"
1358.       maxOccurs="unbounded" />
1359.     <xsd:element ref="FRBRalias" minOccurs="0"
1360.       maxOccurs="unbounded" />
1361.     <xsd:element ref="FRBRdate" />
1362.     <xsd:element ref="FRBRauthor" minOccurs="1"
1363.       maxOccurs="unbounded" />
1364.     <xsd:element ref="components" minOccurs="0" maxOccurs="1" />
1365.     <xsd:element ref="preservation" minOccurs="0" maxOccurs="1" />
1366.   </xsd:sequence>
1367. </xsd:complexType>
1368. <xsd:element name="FRBRWork" type="coreProperties" />
1369.
1370. <xsd:element name="FRBRExpression" type="coreProperties" />
1371.
1372. <xsd:element name="FRBRManifestation" type="coreProperties" />
1373.
1374. <xsd:element name="FRBRthis" >
1375.   <xsd:complexType>
1376.     <xsd:complexContent>
1377.       <xsd:extension base="metaopt">
1378.         <xsd:attributeGroup ref="value"/>
1379.       </xsd:extension>
1380.     </xsd:complexContent>
1381.   </xsd:complexType>
1382. </xsd:element>
1383.
```

```
1384. <xsd:element name="FRBRuri" >
1385.     <xsd:complexType>
1386.         <xsd:complexContent>
1387.             <xsd:extension base="metaopt">
1388.                 <xsd:attributeGroup ref="value"/>
1389.             </xsd:extension>
1390.         </xsd:complexContent>
1391.     </xsd:complexType>
1392. </xsd:element>
1393.
1394. <xsd:element name="FRBRalias" >
1395.     <xsd:complexType>
1396.         <xsd:complexContent>
1397.             <xsd:extension base="metaopt">
1398.                 <xsd:attributeGroup ref="value"/>
1399.             </xsd:extension>
1400.         </xsd:complexContent>
1401.     </xsd:complexType>
1402. </xsd:element>
1403.
1404. <xsd:element name="FRBRdate" >
1405.     <xsd:complexType>
1406.         <xsd:complexContent>
1407.             <xsd:extension base="metaopt">
1408.                 <xsd:attributeGroup ref="date"/>
1409.                 <xsd:attributeGroup ref="name"/>
1410.             </xsd:extension>
1411.         </xsd:complexContent>
1412.     </xsd:complexType>
1413. </xsd:element>
1414.
1415. <xsd:element name="FRBRauthor" >
1416.     <xsd:complexType>
1417.         <xsd:complexContent>
1418.             <xsd:extension base="metaopt">
1419.                 <xsd:attributeGroup ref="link"/>
1420.                 <xsd:attribute name="as" type="xsd:anyURI"/>
1421.             </xsd:extension>
1422.         </xsd:complexContent>
1423.     </xsd:complexType>
```

1424. </xsd:element>
1425.
1426. <xsd:complexType name="comp" >
1427. <xsd:sequence >
1428. <xsd:element ref="component" minOccurs="0"
maxOccurs="unbounded" />
1429. </xsd:sequence>
1430. </xsd:complexType>
1431.
1432. <xsd:element name="components" type="comp" />
1433.
1434. <xsd:element name="component" >
1435. <xsd:complexType>
1436. <xsd:complexContent>
1437. <xsd:extension base="comp">
1438. <xsd:attributeGroup ref="idreq"/>
1439. <xsd:attributeGroup ref="name"/>
1440. <xsd:attributeGroup ref="link"/>
1441. <xsd:attributeGroup ref="show"/>
1442. </xsd:extension>
1443. </xsd:complexContent>
1444. </xsd:complexType>
1445. </xsd:element>
1447.
1448. <xsd:element name="preservation" type="anyOther" />
1449.
1450. <xsd:complexType name="publicationType" >
1451. <xsd:attributeGroup ref="idopt"/>
1452. <xsd:attributeGroup ref="date"/>
1453. <xsd:attributeGroup ref="show"/>
1454. <xsd:attributeGroup ref="name"/>
1455. <xsd:attributeGroup ref="refers"/>
1456. </xsd:complexType>
1457.
1458. <xsd:element name="publication" type="publicationType" />
1459.
1460. <xsd:element name="classification" >
1461. <xsd:complexType >
1462. <xsd:sequence >
1463. <xsd:element ref="keyword" minOccurs="1"
maxOccurs="unbounded" />

1464. </xsd:sequence>
1465. <xsd:attributeGroup ref="source"/>
1466. </xsd:complexType>
1467. </xsd:element>
1468.
1469. <xsd:element name="keyword" >
1470. <xsd:complexType>
1471. <xsd:complexContent>
1472. <xsd:extension base="metaopt">
1473. <xsd:attributeGroup ref="value"/>
1474. <xsd:attributeGroup ref="show"/>
1475. <xsd:attribute name="dictionary" type="xsd:anyURI"
 use="required"/>
1476. </xsd:extension>
1477. </xsd:complexContent>
1478. </xsd:complexType>
1479. </xsd:element>
1480.
1481. <xsd:element name="lifecycle" >
1482. <xsd:complexType >
1483. <xsd:sequence >
1484. <xsd:element ref="event" minOccurs="1"
 maxOccurs="unbounded" />
1485. </xsd:sequence>
1486. <xsd:attributeGroup ref="source"/>
1487. </xsd:complexType>
1488. </xsd:element>
1489.
1490. <xsd:element name="event" >
1491. <xsd:complexType>
1492. <xsd:complexContent>
1493. <xsd:extension base="metareq">
1494. <xsd:attributeGroup ref="date"/>
1495. <xsd:attributeGroup ref="source"/>
1496. <xsd:attribute name="type" type="eventType"/>
1497. </xsd:extension>
1498. </xsd:complexContent>
1499. </xsd:complexType>
1500. </xsd:element>
1501.
1502. <xsd:element name="workflow" >

```

1503.         <xsd:complexType >
1504.             <xsd:sequence >
1505.                 <xsd:element ref="action" minOccurs="1"
maxOccurs="unbounded" />
1506.             </xsd:sequence>
1507.                 <xsd:attributeGroup ref="source"/>
1508.             </xsd:complexType>
1509.         </xsd:element>
1510.
1511.
1512.     <xsd:element name="action" >
1513.         <xsd:complexType>
1514.             <xsd:complexContent>
1515.                 <xsd:extension base="metareq">
1516.                     <xsd:attributeGroup ref="date"/>
1517.                     <xsd:attributeGroup ref="source"/>
1518.                     <xsd:attributeGroup ref="role"/>
1519.                     <xsd:attribute name="type" type="eventType"/>
1520.                 </xsd:extension>
1521.             </xsd:complexContent>
1522.         </xsd:complexType>
1523.     </xsd:element>
1524.
1525.     <xsd:element name="analysis" >
1526.         <xsd:complexType >
1527.             <xsd:sequence >
1528.                 <xsd:element ref="activeModifications" minOccurs="0"
maxOccurs="1" />
1529.                 <xsd:element ref="passiveModifications" minOccurs="0"
maxOccurs="1" />
1530.             </xsd:sequence>
1531.                 <xsd:attributeGroup ref="source"/>
1532.             </xsd:complexType>
1533.         </xsd:element>
1534.
1535.     <xsd:complexType name="Amendments" >
1536.         <xsd:choice minOccurs="1" maxOccurs="unbounded" >
1537.             <xsd:element ref="textualMod" />
1538.             <xsd:element ref="meaningMod" />
1539.             <xsd:element ref="scopeMod" />
1540.             <xsd:element ref="forceMod" />

```

```

1541.         <xsd:element ref="efficacyMod" />
1542.         <xsd:element ref="legalSystemMod" />
1543.     </xsd:choice>
1544. </xsd:complexType>
1545.
1546.     <xsd:complexType name="modificationType" >
1547.         <xsd:sequence >
1548.             <xsd:element ref="source" minOccurs="1"
maxOccurs="unbounded" />
1549.             <xsd:element ref="destination" minOccurs="1"
maxOccurs="unbounded" />
1550.             <xsd:element ref="force" minOccurs="0" maxOccurs="1" />
1551.             <xsd:element ref="efficacy" minOccurs="0" maxOccurs="1" />
1552.             <xsd:element ref="application" minOccurs="0" maxOccurs="1" />
1553.             <xsd:element ref="duration" minOccurs="0" maxOccurs="1" />
1554.             <xsd:element ref="condition" minOccurs="0" maxOccurs="1" />
1555.         </xsd:sequence>
1556.         <xsd:attributeGroup ref="idreq"/>
1557.         <xsd:attributeGroup ref="enactment"/>
1558.         <xsd:attributeGroup ref="modifiers"/>
1559.         <xsd:attributeGroup ref="refers"/>
1560.     </xsd:complexType>
1561.
1562.     <xsd:simpleType name="TextualMods" >
1563.         <xsd:restriction base="xsd:string">
1564.             <xsd:enumeration value="repeal" />
1565.             <xsd:enumeration value="substitution" />
1566.             <xsd:enumeration value="insertion" />
1567.             <xsd:enumeration value="replacement" />
1568.             <xsd:enumeration value="renumbering" />
1569.         </xsd:restriction>
1570.     </xsd:simpleType>
1571.
1572.     <xsd:simpleType name="MeaningMods" >
1573.         <xsd:restriction base="xsd:string">
1574.             <xsd:enumeration value="variation" />
1575.             <xsd:enumeration value="termModification" />
1576.             <xsd:enumeration value="authenticInterpretation" />
1577.         </xsd:restriction>
1578.     </xsd:simpleType>
1579.

```

1580. <xsd:simpleType name="ScopeMods" >
1581. <xsd:restriction base="xsd:string">
1582. <xsd:enumeration value="exceptionOfScope" />
1583. <xsd:enumeration value="extensionOfScope" />
1584. </xsd:restriction>
1585. </xsd:simpleType>
1586.
1587. <xsd:simpleType name="ForceMods" >
1588. <xsd:restriction base="xsd:string">
1589. <xsd:enumeration value="entryIntoForce" />
1590. <xsd:enumeration value="endOfEnactment" />
1591. <xsd:enumeration value="postponementOfEntryIntoForce" />
1592. <xsd:enumeration value="prorogationOfForce" />
1593. <xsd:enumeration value="reEnactment" />
1594. <xsd:enumeration value="unconstitutionality" />
1595. </xsd:restriction>
1596. </xsd:simpleType>
1597.
1598. <xsd:simpleType name="EfficacyMods" >
1599. <xsd:restriction base="xsd:string">
1600. <xsd:enumeration value="entryIntoEfficacy" />
1601. <xsd:enumeration value="endOfEfficacy" />
1602. <xsd:enumeration value="inapplication" />
1603. <xsd:enumeration value="retroactivity" />
1604. <xsd:enumeration value="extraefficacy" />
1605. <xsd:enumeration value="postponementOfEfficacy" />
1606. <xsd:enumeration value="prorogationOfEfficacy" />
1607. </xsd:restriction>
1608. </xsd:simpleType>
1609.
1610. <xsd:simpleType name="LegalSystemMods" >
1611. <xsd:restriction base="xsd:string">
1612. <xsd:enumeration value="staticReference" />
1613. <xsd:enumeration value="implementation" />
1614. <xsd:enumeration value="ratification" />
1615. <xsd:enumeration value="application" />
1616. <xsd:enumeration value="legislativeDelegation" />
1617. <xsd:enumeration value="deregulation" />
1618. <xsd:enumeration value="conversion" />
1619. <xsd:enumeration value="expiration" />

```

1620.          <xsd:enumeration value="reiteration" />
1621.          <xsd:enumeration value="remaking" />
1622.          <xsd:enumeration value="republication" />
1623.          <xsd:enumeration value="coordination" />
1624.      </xsd:restriction>
1625.  </xsd:simpleType>
1626.
1627.      <xsd:element name="activeModifications" type="Amendments" />
1628.
1629.      <xsd:element name="passiveModifications" type="Amendments" />
1630.
1631.      <xsd:element name="textualMod" >
1632.          <xsd:complexType >
1633.              <xsd:complexContent>
1634.                  <xsd:extension base="modificationType">
1635.                      <xsd:sequence >
1636.                          <xsd:element ref="old" minOccurs="0"
maxOccurs="1" />
1637.                          <xsd:element ref="new" minOccurs="0"
maxOccurs="1" />
1638.                      </xsd:sequence>
1639.                      <xsd:attribute name="type" type="TextualMods"
use="required"/>
1640.                  </xsd:extension>
1641.              </xsd:complexContent>
1642.          </xsd:complexType>
1643.      </xsd:element>
1644.
1645.      <xsd:element name="meaningMod" >
1646.          <xsd:complexType >
1647.              <xsd:complexContent>
1648.                  <xsd:extension base="modificationType">
1649.                      <xsd:sequence >
1650.                          <xsd:element ref="domain" minOccurs="0"
maxOccurs="1" />
1651.                      </xsd:sequence>
1652.                      <xsd:attribute name="type" type="MeaningMods"
use="required"/>
1653.                  </xsd:extension>
1654.              </xsd:complexContent>
1655.          </xsd:complexType>

```

```

1656.         </xsd:element>
1657.
1658.
1659.         <xsd:element name="scopeMod" >
1660.             <xsd:complexType >
1661.                 <xsd:complexContent>
1662.                     <xsd:extension base="modificationType">
1663.                         <xsd:sequence >
1664.                             <xsd:element ref="domain" minOccurs="0"
maxOccurs="1" />
1665.                         </xsd:sequence>
1666.                         <xsd:attribute name="type" type="ScopeMods"
use="required"/>
1667.                     </xsd:extension>
1668.                 </xsd:complexContent>
1669.             </xsd:complexType>
1670.         </xsd:element>
1671.
1672.         <xsd:element name="forceMod" >
1673.             <xsd:complexType>
1674.                 <xsd:complexContent>
1675.                     <xsd:extension base="modificationType">
1676.                         <xsd:attribute name="type" type="ForceMods"
use="required"/>
1677.                     </xsd:extension>
1678.                 </xsd:complexContent>
1679.             </xsd:complexType>
1680.         </xsd:element>
1681.
1682.         <xsd:element name="efficacyMod" >
1683.             <xsd:complexType>
1684.                 <xsd:complexContent>
1685.                     <xsd:extension base="modificationType">
1686.                         <xsd:attribute name="type" type="EfficacyMods"
use="required"/>
1687.                     </xsd:extension>
1688.                 </xsd:complexContent>
1689.             </xsd:complexType>
1690.         </xsd:element>
1691.
1692.         <xsd:element name="legalSystemMod" >
1693.             <xsd:complexType>

```

1694. <xsd:complexContent>
1695. <xsd:extension base="modificationType">
1696. <xsd:attribute name="type" type="LegalSystemMods"
use="required"/>
1697. </xsd:extension>
1698. </xsd:complexContent>
1699. </xsd:complexType>
1700. </xsd:element>
1701.
1702. <xsd:element name="source" type="argumentType" />
1703.
1704. <xsd:element name="destination" type="argumentType" />
1705.
1706. <xsd:element name="force" type="periodType" />
1707.
1708. <xsd:element name="efficacy" type="periodType" />
1709.
1710. <xsd:element name="application" type="periodType" />
1711.
1712. <xsd:element name="duration" type="periodType" />
1713.
1714. <xsd:element name="condition" >
1715. <xsd:complexType>
1716. <xsd:complexContent>
1717. <xsd:extension base="anyOtherType">
1718. <xsd:attribute name="frozen" type="xsd:boolean"/>
1719. </xsd:extension>
1720. </xsd:complexContent>
1721. </xsd:complexType>
1722. </xsd:element>
1723.
1724. <xsd:element name="old" type="anyOtherType" />
1725.
1726. <xsd:element name="new" type="anyOtherType" />
1727.
1728. <xsd:element name="domain" type="anyOtherType" />
1729.
1730. <xsd:group name="docRefs">
1731. <xsd:choice>
1732. <xsd:element ref="original"/>
1733. <xsd:element ref="passiveRef"/>

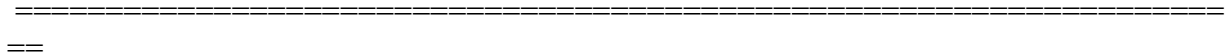
```

1734.          <xsd:element ref="activeRef"/>
1735.          <xsd:element ref="jurisprudence"/>
1736.          <xsd:element ref="hasAttachment"/>
1737.          <xsd:element ref="attachmentOf"/>
1738.      </xsd:choice>
1739. </xsd:group>
1740.
1741. <xsd:group name="TLCs">
1742.     <xsd:choice>
1743.         <xsd:element ref="TLCPerson"/>
1744.         <xsd:element ref="TLCOrganization"/>
1745.         <xsd:element ref="TLCCConcept"/>
1746.         <xsd:element ref="TLCObject"/>
1747.         <xsd:element ref="TLCEvent"/>
1748.         <xsd:element ref="TLCPlace"/>
1749.         <xsd:element ref="TLCProcess"/>
1750.         <xsd:element ref="TLCRole"/>
1751.         <xsd:element ref="TLCTerm"/>
1752.         <xsd:element ref="TLCReference"/>
1753.     </xsd:choice>
1754. </xsd:group>
1755.
1756. <xsd:group name="refItems">
1757.     <xsd:choice>
1758.         <xsd:group ref="docRefs" />
1759.         <xsd:group ref="TLCs" />
1760.     </xsd:choice>
1761. </xsd:group>
1762.
1763. <xsd:element name="references" >
1764.     <xsd:complexType >
1765.         <xsd:sequence minOccurs="1" maxOccurs="unbounded" >
1766.             <xsd:group ref="refItems" />
1767.         </xsd:sequence>
1768.         <xsd:attributeGroup ref="source"/>
1769.     </xsd:complexType>
1770. </xsd:element>
1771.
1772. <xsd:element name="original" type="referenceType" />
1773.

```

1774. <xsd:element name="passiveRef" type="referenceType" />
1775.
1776. <xsd:element name="activeRef" type="referenceType" />
1777.
1778. <xsd:element name="jurisprudence" type="referenceType" />
1779.
1780. <xsd:element name="hasAttachment" >
1781. <xsd:complexType>
1782. <xsd:complexContent>
1783. <xsd:extension base="referenceType">
1784. <xsd:attribute name="type" type="xsd:string"/>
1785. </xsd:extension>
1786. </xsd:complexContent>
1787. </xsd:complexType>
1788. </xsd:element>
1789.
1790. <xsd:element name="attachmentOf" >
1791. <xsd:complexType>
1792. <xsd:complexContent>
1793. <xsd:extension base="referenceType">
1794. <xsd:attribute name="type" type="xsd:string"/>
1795. </xsd:extension>
1796. </xsd:complexContent>
1797. </xsd:complexType>
1798. </xsd:element>
1799.
1800. <xsd:element name="TLCPerson" type="referenceType" />
1801.
1802. <xsd:element name="TLCOrganization" type="referenceType" />
1803.
1804. <xsd:element name="TLCConcept" type="referenceType" />
1805.
1806. <xsd:element name="TLCObject" type="referenceType" />
1807.
1808. <xsd:element name="TLCEvent" type="referenceType" />
1809.
1810. <xsd:element name="TLCPlace" type="referenceType" />
1811.
1812. <xsd:element name="TLCProcess" type="referenceType" />
1813.

1814. <xsd:element name="TLCRole" type="referenceType" />
1815.
1816. <xsd:element name="TLCTerm" type="referenceType" />
1817.
1818. <xsd:element name="TLCTReference" >
1819. <xsd:complexType>
1820. <xsd:complexContent>
1821. <xsd:extension base="referenceType">
1822. <xsd:attributeGroup ref="name"/>
1823. </xsd:extension>
1824. </xsd:complexContent>
1825. </xsd:complexType>
1826. </xsd:element>
1827.
1828. <xsd:element name="notes" >
1829. <xsd:complexType >
1830. <xsd:sequence minOccurs="1" maxOccurs="unbounded" >
1831. <xsd:element ref="note" />
1832. </xsd:sequence>
1833. <xsd:attributeGroup ref="source"/>
1834. </xsd:complexType>
1835. </xsd:element>
1836.
1837. <xsd:element name="note" type="blocksreq" />
1838.
1839. <xsd:element name="proprietary" >
1840. <xsd:complexType>
1841. <xsd:complexContent>
1842. <xsd:extension base="anyOther">
1843. <xsd:attributeGroup ref="source"/>
1844. </xsd:extension>
1845. </xsd:complexContent>
1846. </xsd:complexType>
1847. </xsd:element>
1848.
1849. <xsd:annotation>
1850. <xsd:documentation>
1851.



1852.

1853. End of Schema

1854.

1855.

=====

1856. </xsd:documentation>

1857. </xsd:annotation>

1859.

1860. <
/xsd:sch
ema>

1861.

1862.